







# PrSINEMET® and PrSINEMET® CR TABLET COMPARISON CHART





**PrSINEMET®**  
(levodopa and carbidopa tablets)

Tablets are shown at actual size

	Previous Image	Current Image
<b>SINEMET® 100/10</b>		
<b>SINEMET® 100/25</b>		
<b>SINEMET® 250/25</b>		

**PrSINEMET® CR**  
(levodopa and carbidopa controlled-release tablets)

Tablets are shown at actual size

	Previous Image	Current Image
<b>SINEMET® CR 100/25</b>		
<b>SINEMET® CR 200/50</b>		

SINEMET® and SINEMET® CR are registered trademarks of Merck Sharp & Dohme Corp., a subsidiary of Merck & Co., Inc. Used under license.



# Apparence des comprimés <sup>Pr</sup>SINEMET<sup>®</sup> et <sup>Pr</sup>SINEMET<sup>®</sup> CR

## Tableau comparatif

**SINEMET<sup>®</sup>**

(comprimés de lévodopa et de carbidopa)

Comprimés sont présentés en taille réelle

Ancienne apparence

Nouvelle apparence

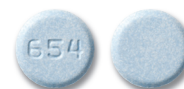
**SINEMET<sup>®</sup> 100/10**



**SINEMET<sup>®</sup> 100/25**



**SINEMET<sup>®</sup> 250/25**



**SINEMET<sup>®</sup> CR**

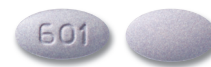
(comprimés de lévodopa et de carbidopa à libération prolongée)

Comprimés sont présentés en taille réelle

Ancienne apparence

Nouvelle apparence

**SINEMET<sup>®</sup> CR 100/25**



**SINEMET<sup>®</sup> CR 200/50**



SINEMET<sup>®</sup> et SINEMET<sup>®</sup> CR sont des marques déposées de Merck Sharp & Dohme Corp., filiale de **Merck & Co., Inc.**, utilisées sous licence.

